

# AB1700 Microarray Data Analysis

Yongming Andrew Sun, Applied Biosystems  
sunya@appliedbiosystems.com

October 30, 2025

## 1 ABarray GUI

The ABarrayGUI can be used to perform analysis on AB1700 output. The analysis is the same as the command-line version of *ABarray*. To start the GUI, perform the following in R:

```
> library(ABarray)
```

```
Loading required package: Biobase
```

```
Loading required package: tools
```

```
Welcome to Bioconductor
```

```
Vignettes contain introductory material.
```

```
To view, simply type 'openVignette()' or start with 'help(Biobase)'.
```

```
For details on reading vignettes, see the openVignette help page.
```

```
Loading required package: multtest
```

```
Loading required package: survival
```

```
Loading required package: splines
```

```
Welcome to Applied Biosystems AB1700
```

```
This package performs analysis for AB1700  
gene expression data
```

```
> ABarrayGUI()
```

```
Loading required package: tcltk
```

```
Loading Tcl/Tk interface ... done
```

```
<Tcl>
```

GUI window starts (Figure 1). There are several options need to be selected.

## 2 GUI options

As with the command-line version, two files should be ready before analysis can be performed. One is design file, the other one is data file. See document *ABarray.pdf* for information how to prepare these 2 files.

- DesignFile: Press **Browse File** to navigate and select the design file. Once design file is selected, the R working directory will change to where the design file is located.
- DataFile: Press **Browse File** to navigate and select the data file to be used.
- Choose impute function: There are 2 impute functions available.

- Use  $t$  test: If this is selected,  $t$  test will be performed on the specified group (and ANOVA if more than 2 subgroups).
- Specify  $t$  test group: Which group should the  $t$  test be performed on? Even if you do not intend to perform  $t$  test, you should supply the group information, as the ordering of array experiments relies on the group information. The group is automatically selected from the design file (the first group in the design file).
- Specify filtering options
  - S/N threshold: The S/N threshold a probe is considered detectable.
  - % Detect Samples: The percentage of samples in any given subgroup in which a probe can be detected in order to be included in  $t$  test or ANOVA analysis. Note, the number is in decimal format.
- Perform Analysis: Press the button to begin data analysis.

Once the analysis is done, the following message will appear:

```
*****Analysis completed*****
```

and the GUI window (Figure 1) will go away.

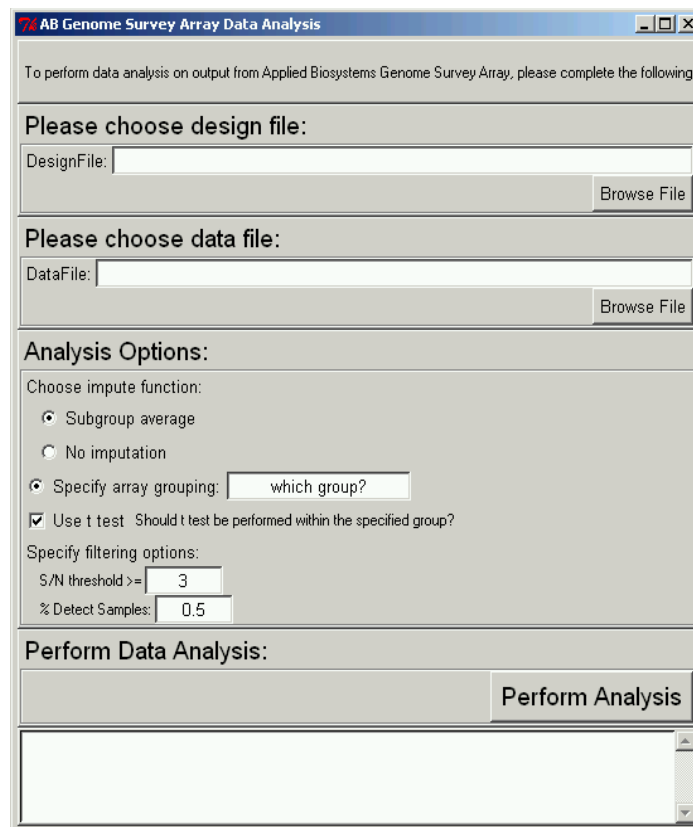


Figure 1: ABarray GUI window